

# Connecting to Your “ccTLD”

- A Word on Programs
  - SSH (Secure Shell) is the primary connection protocol used in this network. You must provide a username AND a identity key to login
  - You can use any ssh client you are familiar with, but we have Putty available for Windows users
  - To view web pages on your network (e.g. network monitoring from your NOC), use any browser you are comfortable with
- Download links for Putty and identity keys are available on the wiki...

# Connecting to Your “ccTLD”

X – your group  
number, 203-220

- Connecting to Your NOC
  - SSH as ‘tldadmin’ user to 10.X.1.2
  - Password: tldadmin!
  - Enable Password: tldadmin!
- Example: X=202 ssh tldadmin@10.202.1.2

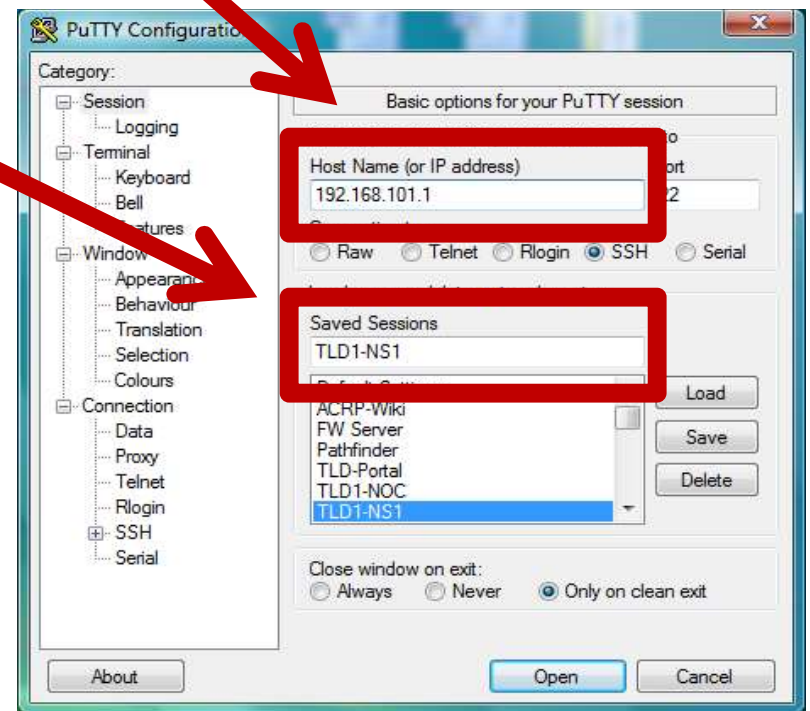
# Connecting to Your “ccTLD”

X – your group  
number, 203-220

- Connecting to Your NOC
  - SSH as ‘tldadmin’, with tldadmin identity key to 10.X.1.2
  - Password: tldadmin!
- Example: `ssh -i tldadmin tldadmin@10.202.1.2`

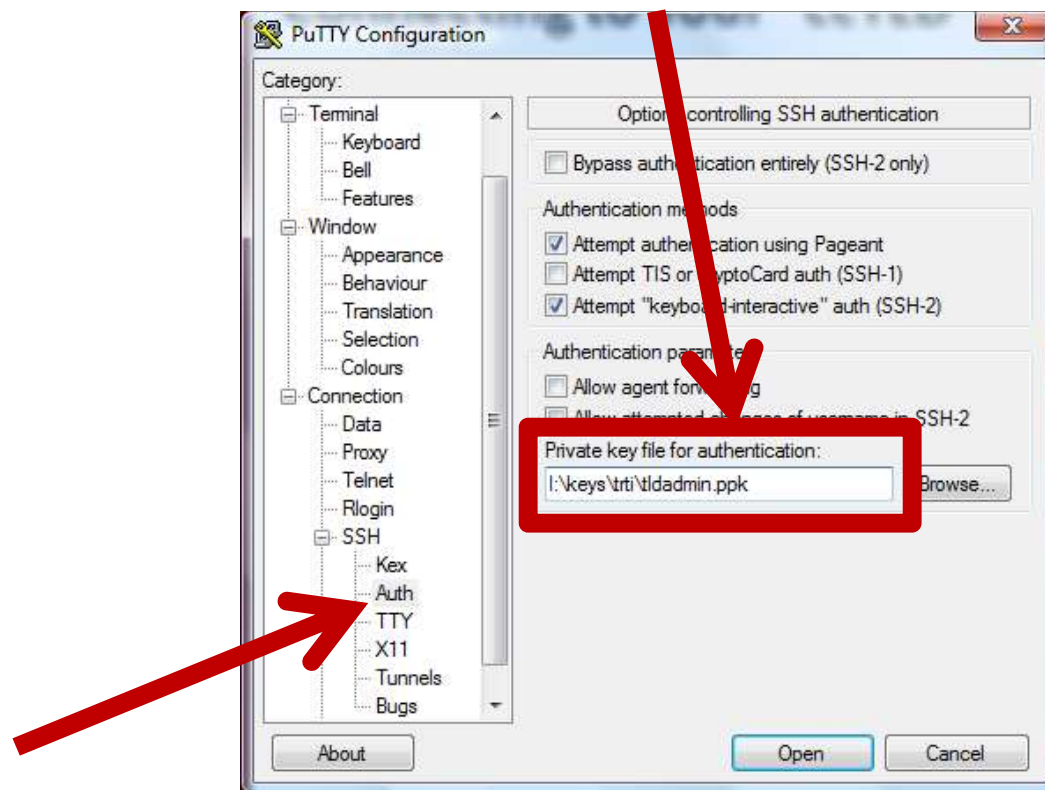
# Connecting to Your “ccTLD”

- Connecting to Your NOC with Putty
  - IP Address: 10.X.1.2
  - Enter “TLD-NOC” in Saved Sessions Box



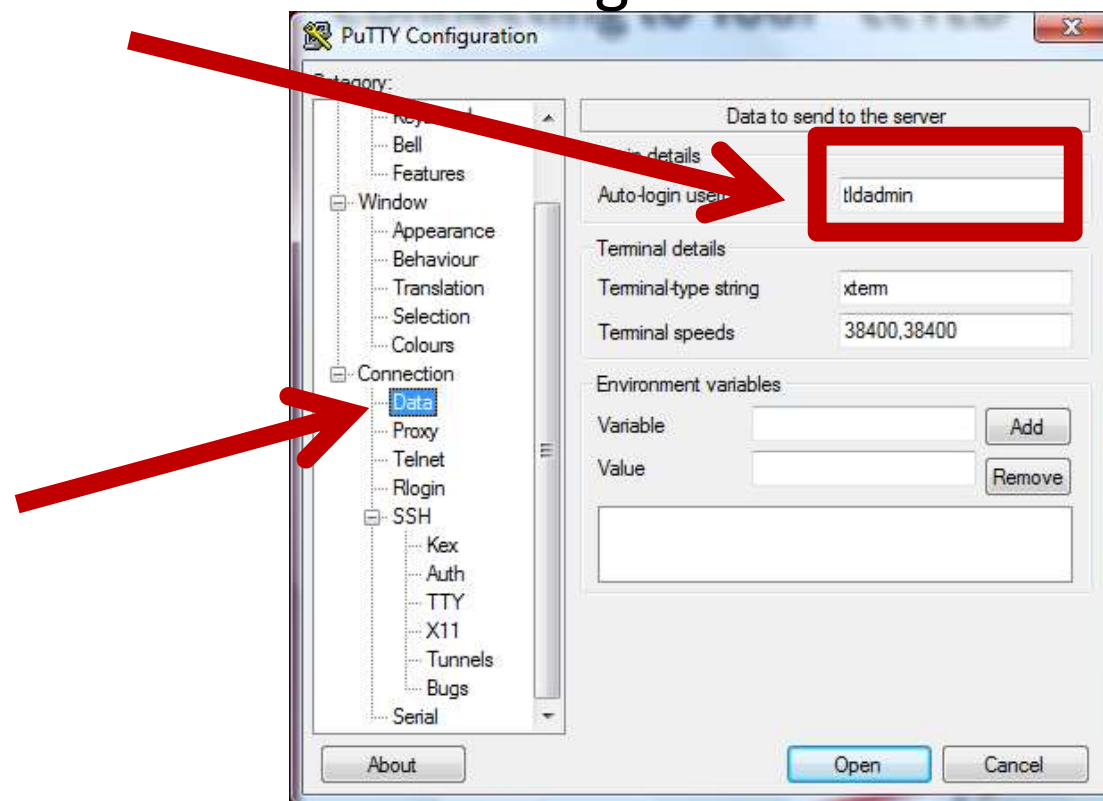
# Connecting to Your “ccTLD”

- Connecting to Your NOC with Putty
  - Click Connection -> SSH -> Auth
  - Identity File: Path to ssh.ppk



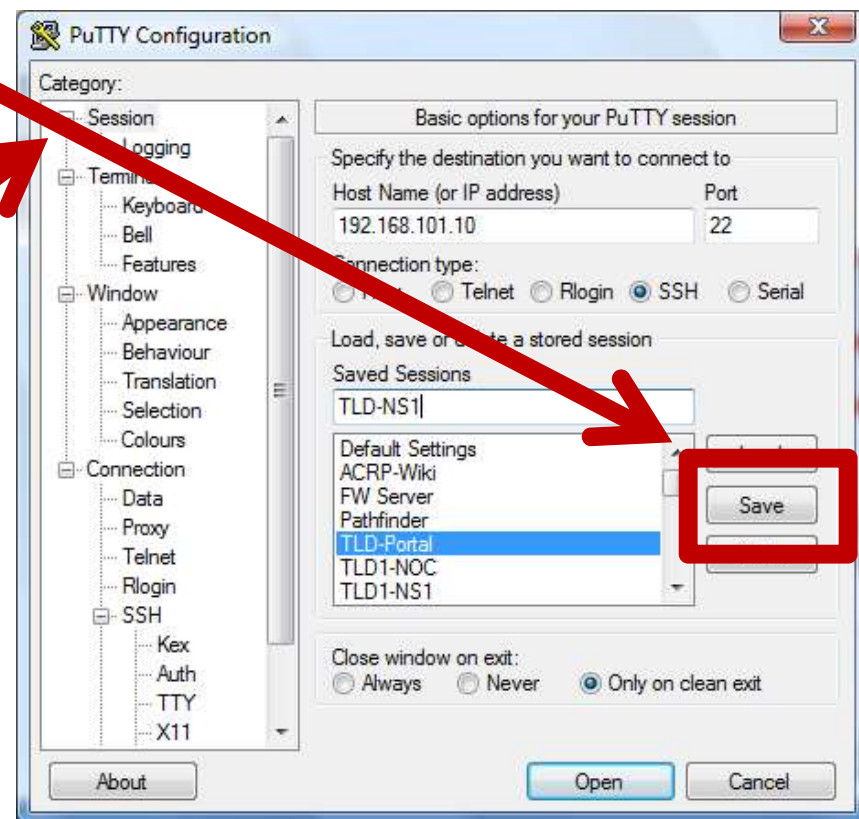
# Connecting to Your “ccTLD”

- Connecting to Your NOC with Putty
  - Click Connection -> Data
  - Enter ‘tldadmin’ for Auto-login username



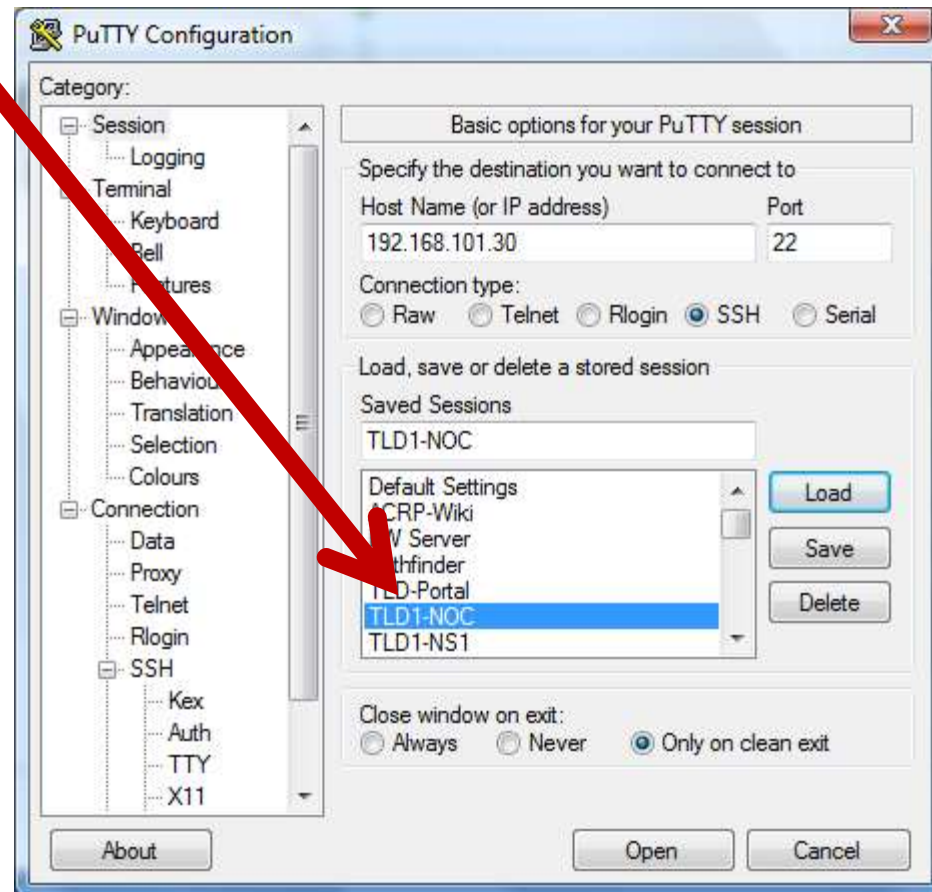
# Connecting to Your “ccTLD”

- Connecting to Your NOC with Putty
  - Click Session
  - Click “Save”



# Connecting to Your “ccTLD”

- Connecting to Your NOC with Putty
  - Double Click the Session Name to Connect!







# Your “ccTLD” Configuration

- Your NOC is a base installation of Ubuntu 14.04 Server with OpenSSH server
  - We’ll be adding to this as we move through the course
- Your NS is a base installation of Ubuntu 14.04 Server with OpenSSH and BIND
  - We may make BIND configuration changes as we go

# Ground Rules

- Please respect other student's registries – while you have the power to do so, do not change them!
- Please respect the underlying servers running as LXC's and VLAN networked!
- Please don't make any configuration changes except those presented in class!
- Please respect the course management servers, wiki and attack boxes – they are there to assist in course delivery!
- Do not conduct cyber attacks on others students or the instructors!

# Practice Exercises

- View Exercises on Wiki
  1. Login to your Nameserver by SSH
  2. Login to your NOC by SSH\*\* Be sure to save your SSH profiles to make connections easier – you'll be doing a lot of this!

